

# Getting GPX files from phone to computer and back

## Saving tracks to storage on the phone

My phone app is Outdoor Atlas, on a Samsung S5 (Android). And example map is shown to the right. Parts of this document will be equally applicable to other apps.



Click on the menu button in the top left corner – 3 horizontal lines.

Go to the option “My Shapes Manager”

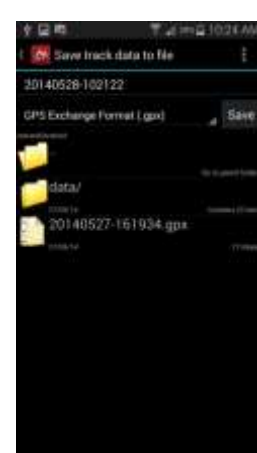
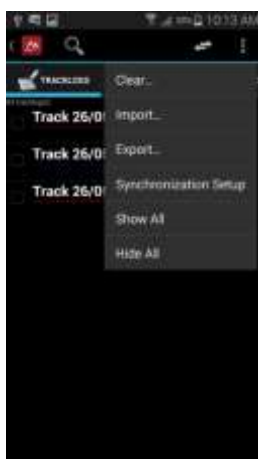
You will see a list of tracks you have saved. First image on the left on this page.)

The next menu you want is at the top right of this screen, Click it and you will see the export option. (It is necessary to export the track since it is stored in the app database, not as a .GPX)

When you press Export, you get a list of folders, nearly all of which have a red symbol signifying you can't write to them. You may have to go up the folder hierarchy to get to where you want to be. One folder is called sdcard, and is accessible. This gives many other folders – you can choose whatever suits.

I have chosen Android.

Pressing Save will save the current tracks as a .GPX.



## Finding the .gpx files to download to the computer

When you plug the phone in to the computer (Windows 7) it sets itself up as a media device or a camera, which means you can only see multimedia files. It may be possible to make it connect as a USB but I can't see how.

If you go (on your computer) to Devices and Printers (on the start menu or via Control Panel | Hardware and Sound) you will see the Galaxy as a device.

Right click the Galaxy icon, and use Browse Files and the phone name.

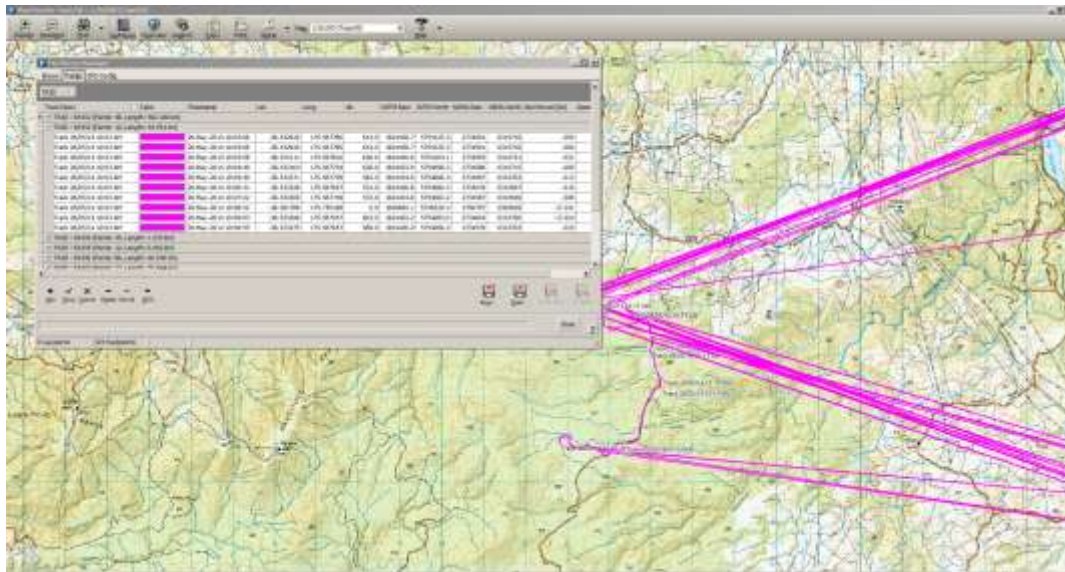
This will show a set of folders that you can browse to find the .gpx – in my case it was in the Android folder.



Once you have found the file on the phone you can drag it to a suitable place on your computer.

## Using the .gpx file in MapToaster

If you go to the My Places item in MapToaster you can click on a tab called Tracks and then on the Open button. Browse to your .gpx file and open it.



In my case there were several tracks, with different numbers of points. You can see in the screen shot that the tracks have been shown on the appropriate map, and that something is clearly wrong – note the movement of 17km between some observations!

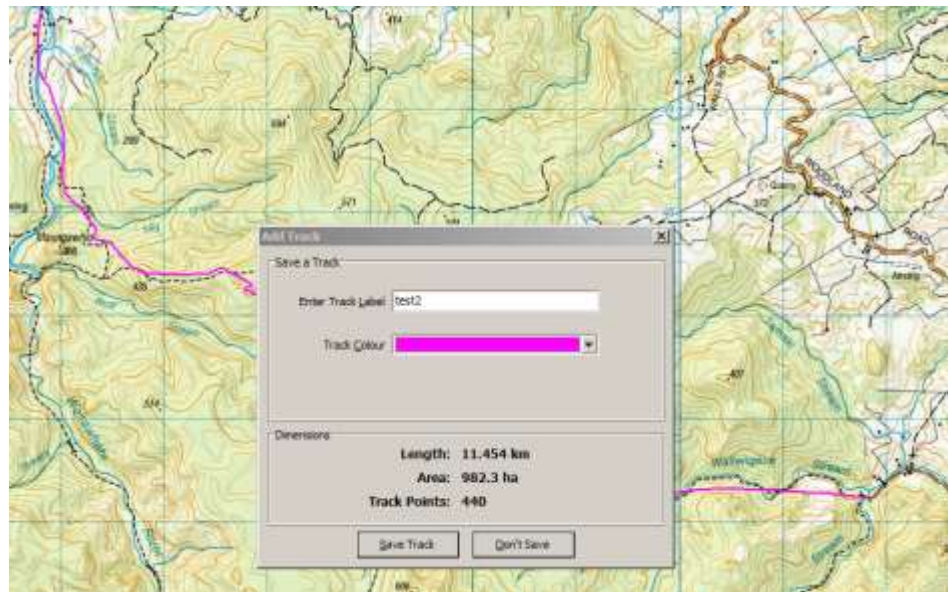
These are gps errors, and you can click on the relevant points in the Tracks view, and delete them.

The result is a detailed and legible picture of my tramp.



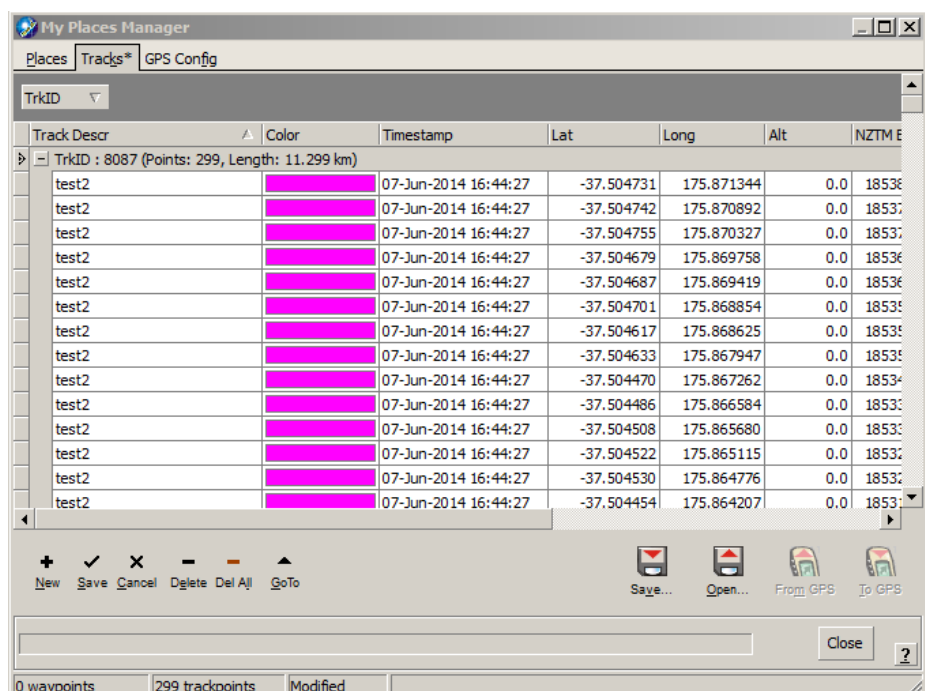
# Transferring routes to phone from MapToaster

First draw the route in MapToaster and when you double click at the end of the route enter a track label.



The route will appear in My Places Manager, with a number as its name, but the name (test2) you gave it on each point.

There is a Save button on this window, which you can use to save it to your computer.



If your phone is connects at this stage, you can browse to a folder that can be opened by your mapping application on the phone . In my test this was not allowed by the operating systems.

Instead, I saved the file to the computer, went to devices and printers, and right clicked the phone icon, as before for taking files off the phone.

I was able to copy the gpx file to Computer\Ray Hoare (Galaxy S5)\Phone\Android.

Using the same steps as used above to move files to the computer, I was able to bring the .gpx file to the phone, and then load it into Outdoor Atlas.